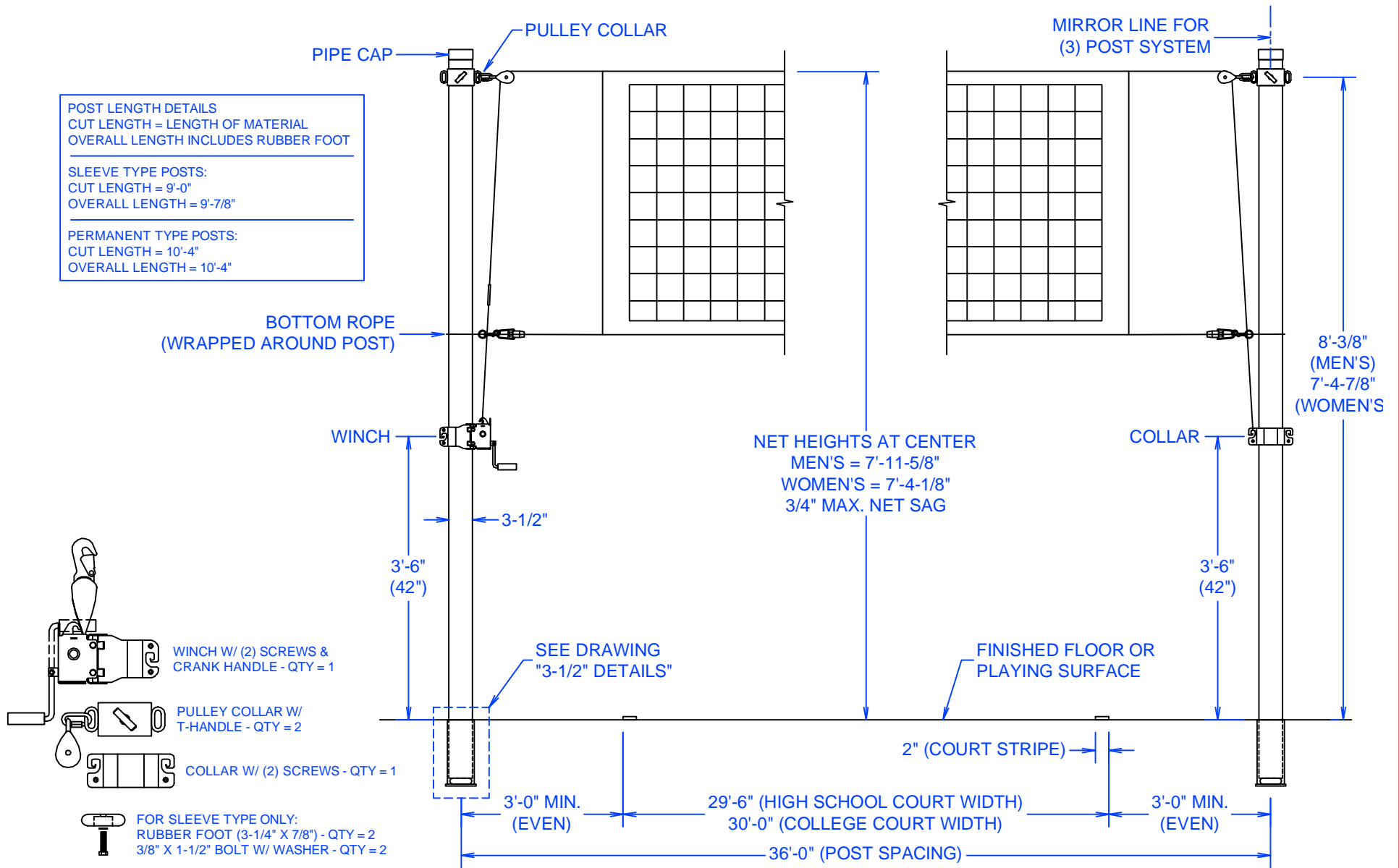


POST LENGTH DETAILS
 CUT LENGTH = LENGTH OF MATERIAL
 OVERALL LENGTH INCLUDES RUBBER FOOT

SLEEVE TYPE POSTS:
 CUT LENGTH = 9'-0"
 OVERALL LENGTH = 9'-7/8"

PERMANENT TYPE POSTS:
 CUT LENGTH = 10'-4"
 OVERALL LENGTH = 10'-4"



REVISION / STAGE:	MONTH / DAY / YEAR	RELATED DRAWINGS / INFORMATION:
LAST UPDATE	JULY 18, 2011	
VBP-S1		THIS DRAWING IS PROPERTY OF ARIZONA COURTLINES, INC. AND MAY NOT BE REPRODUCED WITHOUT WRITTEN PERMISSION

- VBP-S1 - SLEEVE TYPE, POWDER COAT FINISH
 - VBP-S1 - PERMANENT TYPE, POWDER COAT FINISH
 - VBP-S1 - SLEEVE TYPE, GALVANIZED FINISH
 - VBP-S1 - PERMANENT TYPE, GALVANIZED FINISH
- STANDARD STEEL VOLLEYBALL POSTS**
 3-1/2" O.D. STEEL

ARIZONA COURTLINES, INC.

8742 NORTH 78TH AVENUE
 PEORIA, ARIZONA 85345
 TEL. 623.939.8126
 FAX. 623.939.2526
 www.ARIZONACOURTLINES.com

DRAWN BY: EDDIE CAFFERAT
CHECKED BY:
QUANTITY: