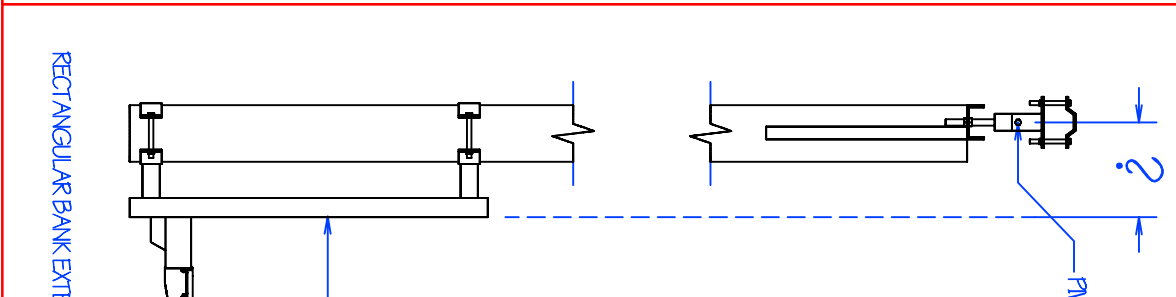
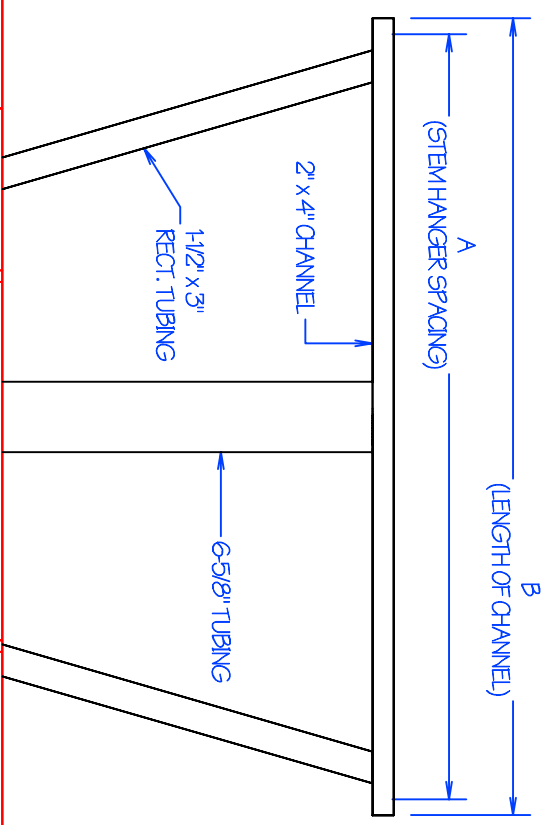


TRUSS HEIGHT	A	B
18'-0" TO 20'-0"	4'-9"	5'-0"
20'-0" TO 25'-0"	6'-0"	6'-3"
25'-0" TO 29'-0"	6'-9"	7'-0"
29'-0" TO 30'-0"	8'-3"	8'-6"
30'-0" TO 32'-0"	9'-3"	9'-6"
32'-0" TO 34'-0"	10'-9"	11'-0"
34'-0" TO 36'-0"	11'-9"	12'-0"
36'-0" TO 38'-0"	12'-9"	13'-0"

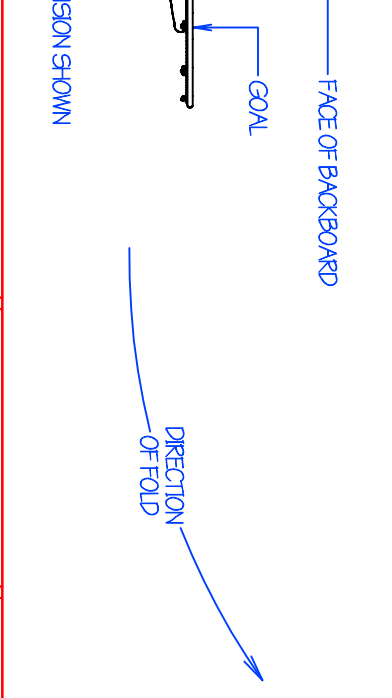
NOTE: THESE ARE STANDARD DIMENSIONS AND ARE TYPICALLY USED ON THE TRUSS HEIGHTS SHOWN. IN SOME CASES AQI WILL PROVIDE A STEM WHICH VARIES FROM THE DIMENSIONS ABOVE. AQI DETERMINES THE BEST STEM FOR EACH PROJECT.



STEM HANGER OFFSET:  
STEM HANGER IS ALWAYS ON OPPOSITE SIDE OF STEM AS THE DIRECTION OF FOLD.

	FF	B F	FF (HGT ADJ)	B F (HGT ADJ)
BACKBOARD	FF	B F	FF (HGT ADJ)	B F (HGT ADJ)
RECT. GLASS	11/8"	8-1/2"	13-3/8"	10-3/4"
FBB-ALUM	10-3/8"	7-3/4"	12-5/8"	10"
FBB-FG	10-7/16"	7-13/16"	12-11/16"	10-1/16"
FBB-GLASS	11/8"	8-1/2"	13-3/8"	10-3/4"
FBB-ST	10-3/8"	7-3/4"	12-5/8"	10"

FF = FORWARD FOLD / B F = BACKWARD FOLD / HGT ADJ = HEIGHT ADJUSTER  
IF THE BACKBOARD YOU ARE INSTALLING IS NOT SHOWN ABOVE OR HAS NOT BEEN PROVIDED BY AQI, USE THE FOLLOWING FORMULAS:  
FORWARD FOLD (8-7/8" + BACKBOARD THICKNESS = ?)  
BACKWARD FOLD (6-1/4" + BACKBOARD THICKNESS = ?)  
FORWARD FOLD W/ HGT ADJ (11-1/8" + BACKBOARD THICKNESS = ?)  
BACKWARD FOLD W/ HGT ADJ (8-1/2" + BACKBOARD THICKNESS = ?)



REGION / STAGE	MONTH / DAY / YEAR	RELATED DRAWINGS / INFORMATION
1D-STANDARD		THIS DRAWING IS PROPERTY OF ARIZONA COURTLINES, INC. AND MAY NOT BE REPRODUCED WITHOUT WRITTEN PERMISSION.

STANDARD DIMENSIONS FOR SINGLE DROP CEILING SUSPENDED BASKETBALL UNITS  
STEM HANGER SPACING / CHANNEL LENGTH DIMENSIONS  
FACE OF BACKBOARD TO PIVOT POINT DIMENSIONS

ARIZONA COURTLINES, INC.

8742 NORTH 75<sup>TH</sup> AVENUE  
PEORIA, ARIZONA 85345  
PHONE (623) 939 8125  
FAX (623) 939 2326  
WWW.ARIZONACOURTLINES.COM

DRAWN BY: EDDIE CAFFERATA  
CHECKED BY: \_\_\_\_\_  
QUANTITY: \_\_\_\_\_